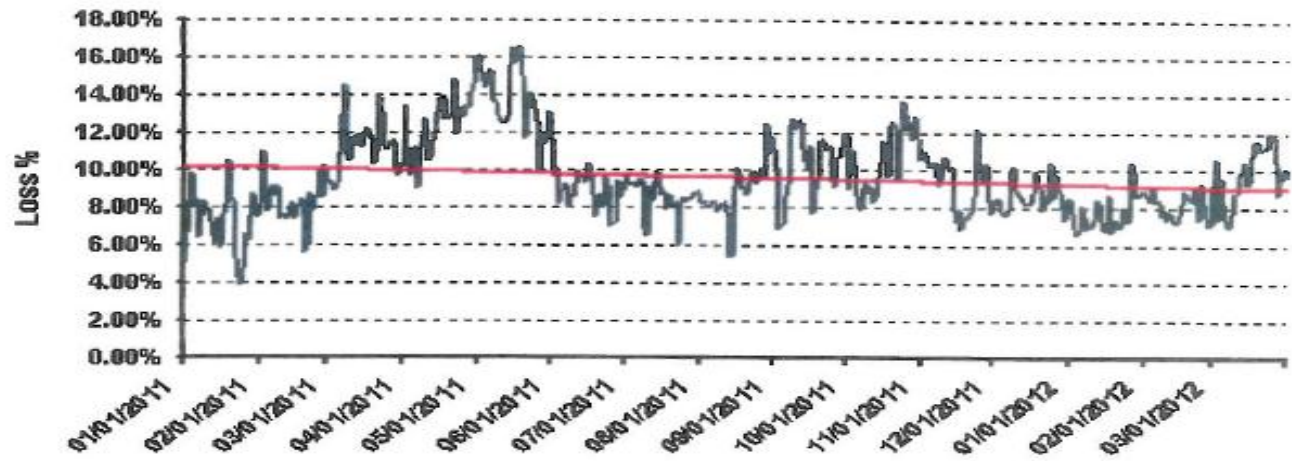


EXHIBIT 1

GSEC Small Customer Group Energy (Default)				GSEC Large Customer Group Energy (Default)			
Service Loads (kWh/h)				Service Loads (kWh/h)			
Final Total Reported Values				Final Total Reported Values			
Month	Including Losses (kWh)	Excluding Losses (kWh)	Loss Factor	Month	Including Losses (kWh)	Excluding Losses (kWh)	Loss Factor
Jan-11	41,368,844	38,610,526	107.14%	Jan-11	20,131,385	19,067,436	105.58%
Feb-11	35,961,155	33,209,029	108.29%	Feb-11	18,301,257	17,159,335	106.65%
Mar-11	36,827,599	33,129,044	111.16%	Mar-11	19,249,924	17,573,263	109.54%
Apr-11	31,661,093	28,177,233	112.36%	Apr-11	18,089,188	16,345,402	110.67%
May-11	31,504,271	27,718,669	113.66%	May-11	19,900,581	17,780,975	111.92%
Jun-11	33,088,014	30,397,266	108.85%	Jun-11	20,251,278	18,879,677	107.26%
Jul-11	41,417,148	38,156,497	108.55%	Jul-11	22,684,274	21,208,515	106.96%
Aug-11	37,973,821	34,868,884	108.90%	Aug-11	22,153,561	20,646,427	107.30%
Sep-11	32,028,232	29,028,347	110.33%	Sep-11	20,156,007	18,526,287	108.80%
Oct-11	31,590,332	28,558,813	110.62%	Oct-11	18,343,874	16,838,772	108.94%
Nov-11	32,373,589	29,607,335	109.34%	Nov-11	17,853,019	16,592,511	107.60%
Dec-11	38,165,654	35,127,417	108.65%	Dec-11	18,246,594	17,036,454	107.10%
Jan-12	40,120,057	37,247,278	107.71%	Jan-12	17,962,347	16,915,337	106.19%
Feb-12	34,610,796	32,006,051	108.14%	Feb-12	16,724,082	15,684,877	106.63%
Mar-12	33,496,637	30,524,352	109.74%	Mar-12	16,885,776	15,601,057	108.23%
Apr-12	30,478,637	27,745,613	109.85%	Apr-12	16,011,068	14,792,833	108.24%
May-12	30,564,631	27,663,915	110.49%	May-12	17,369,178	15,954,645	108.87%

EXHIBIT 2

**Granite State Electric Company
Small Default Service Customer
Losses**



**Granite State Electric Company
Large Default Service Customer
Losses**

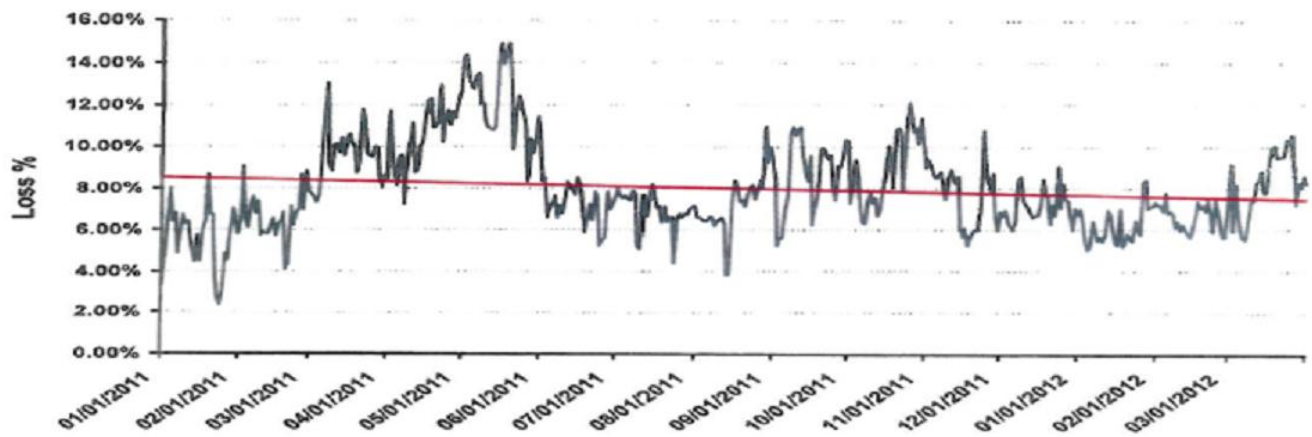


EXHIBIT 3

Granite State SCG & LCG vs. NEMA SCG & LCG

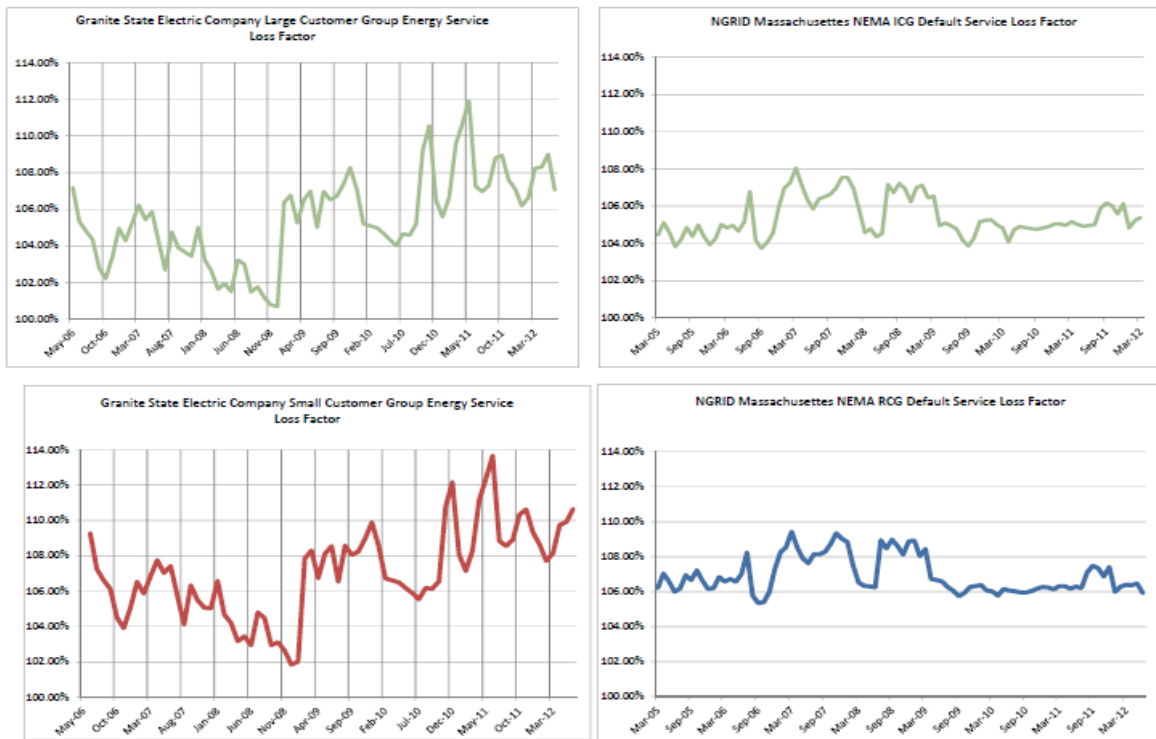


EXHIBIT 4

Liberty Utilities (GSE) Meter Domain

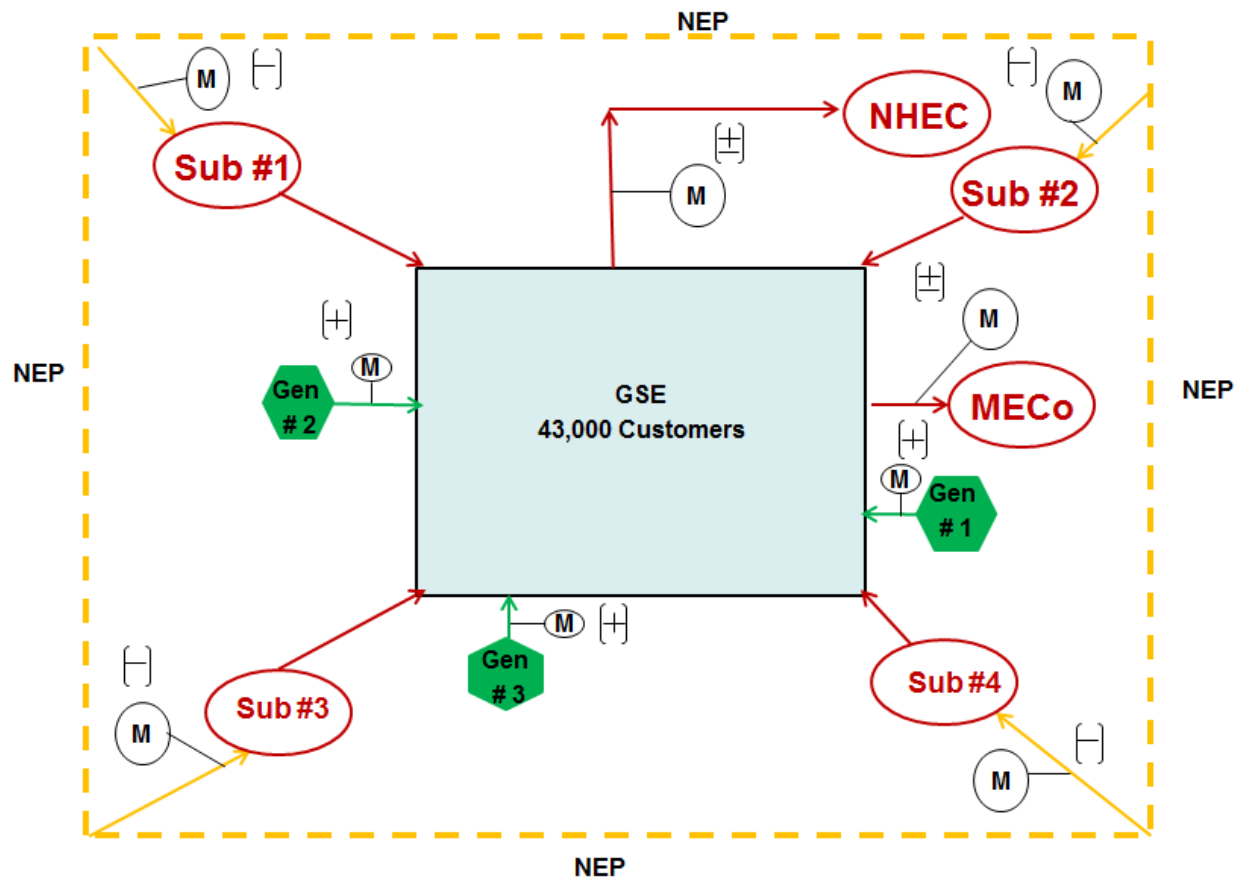


EXHIBIT 5

National Grid (NEP) Meter Domain

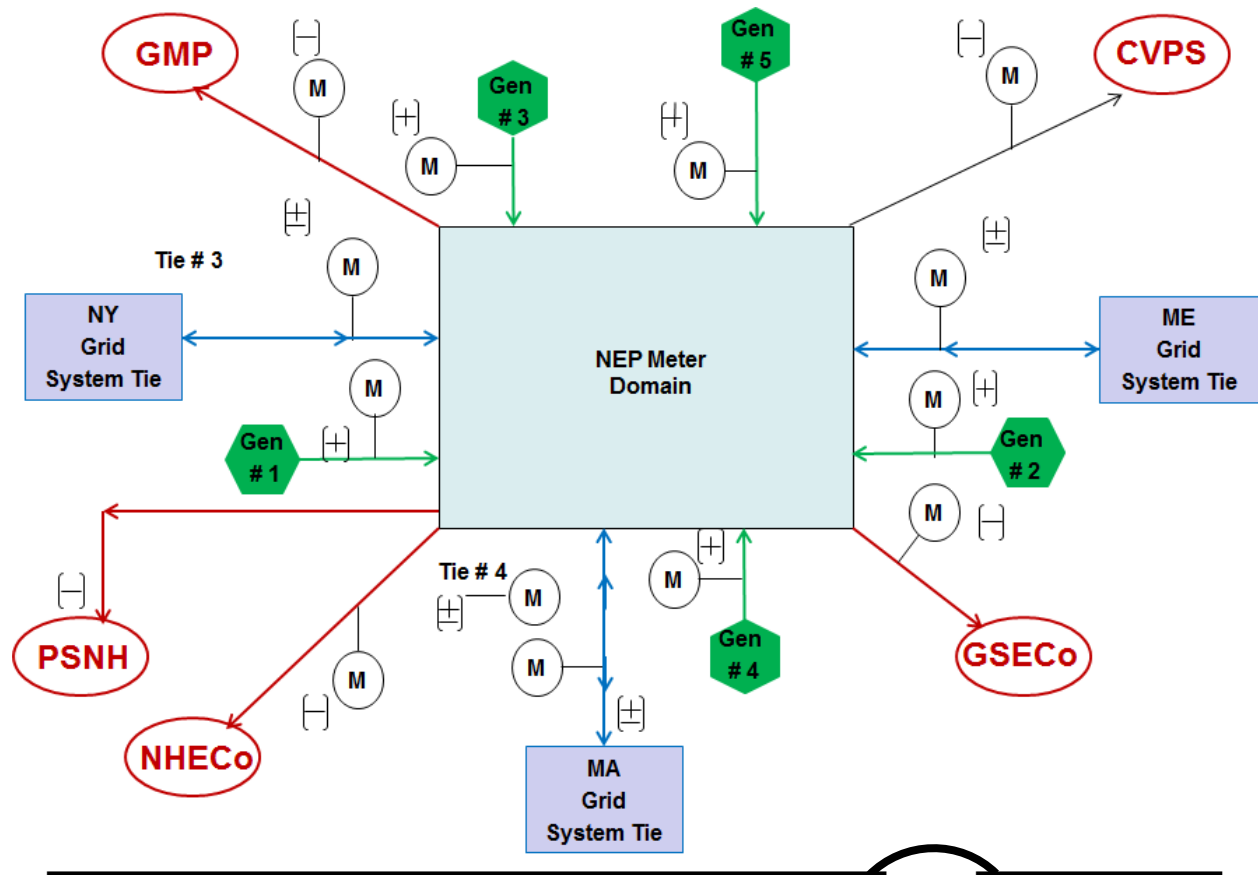


EXHIBIT 6

**Comparison of GSE Default Service Loss Factor to
NGRID-MA Default Service Loss Factor**

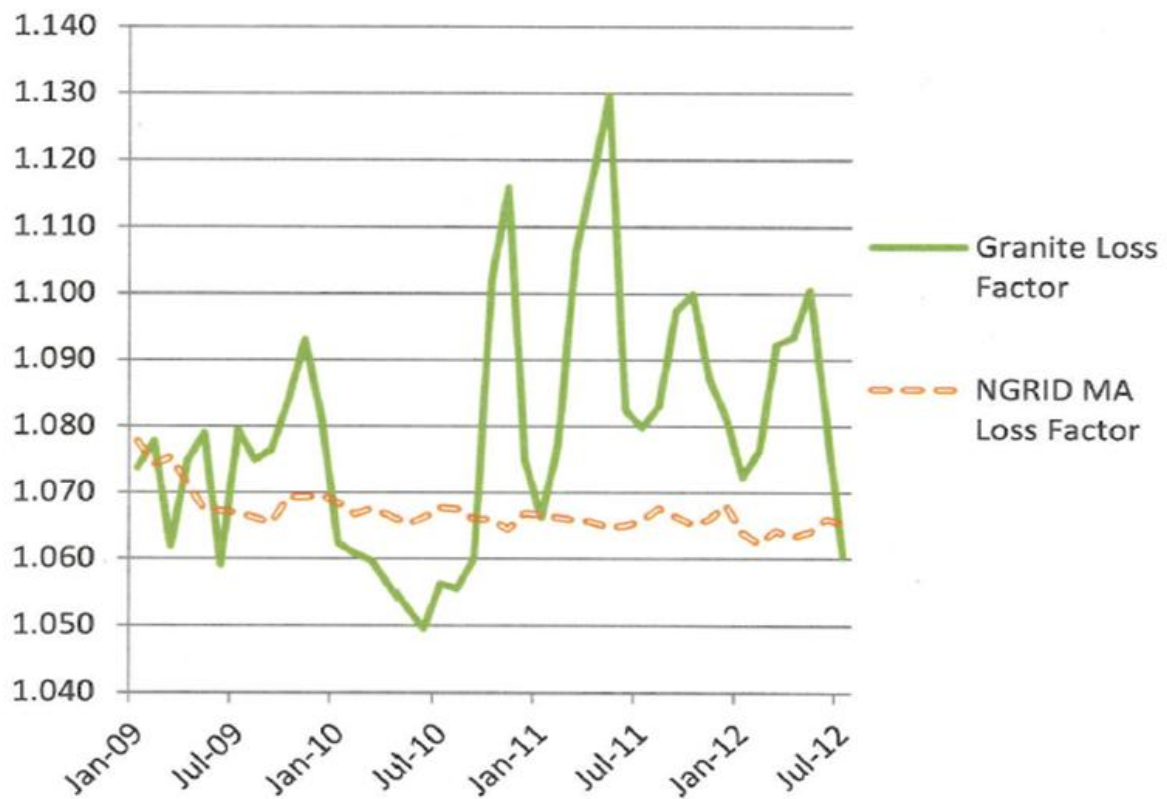


EXHIBIT 7

